

Internal migration in Kazakhstan: urbanization, regional inequality and economic development

Saltanat Baidybekova¹ , Anar Tolamisova^{2*} , Stefan Dyrka³ , Raikhan Turysbekova⁴ 

^{1,2,4} Zhetysu University named after I. Zhansugurov, Taldykorgan, Kazakhstan,

³ W. Korfantego Upper Silesian Academy, Katowice, Poland

² *zhantokab@mail.ru (corresponding author)

Abstract

The purpose of this study is to comprehensively examine the current state and development dynamics of internal migration processes in the Republic of Kazakhstan. The research analyzes the main directions of urbanization, the factors driving population concentration from rural areas to large cities and economically active regions, as well as disparities in socio-economic development across regions. The study also investigates the impact of migration flows on regional economic growth, the concentration of production potential, and increasing pressure on urban infrastructure. Economic and statistical analysis methods were employed. The empirical results indicate that internal migration has contributed to the concentration of labor resources and innovative potential in major economic centers, the expansion of the service sector, and increased labor productivity. Furthermore, the study reveals a structural relationship between internal migration, urbanization, and regional divergence. The findings highlight the need for a balanced regional policy, sustainable rural development, and effective management of the consequences of urbanization. They also emphasize the importance of improving internal migration governance mechanisms, ensuring balanced regional development, and modernizing urban infrastructure. The results can be used to incorporate migration factors into national and regional development policies and to formulate practical recommendations aimed at reducing socio-economic disparities between regions and supporting the country's long-term economic development.

Keywords: internal migration; urbanization; regional inequality; regional development; economic development; labor market; human capital; socio-economic impact; urban infrastructure; migration policy.

Introduction

Internal migration is an important socio-economic process that directly affects the processes of economic development, social inequality and urbanization. In the conditions of modern globalization, the territorial movement of the population determines the redistribution of labor resources, the concentration of human capital and the change in the trajectory of socio-economic development of regions. The main feature of internal migration in the Republic of Kazakhstan is the predominance of migration flows from rural areas to large cities and economically attractive regions.

Such population shifts within the country are closely related to the uneven level of socio-economic development between regions, the diversity of opportunities in the labor market, the level of infrastructure development, and differences in the quality of life. As a result, internal migration processes, on the one hand, accelerate urbanization and strengthen the economic potential of large cities, but on the other hand, lead to a decrease in labor resources in rural and peripheral regions, a change in the demographic structure, and a deepening of regional inequality (Sejtkaliev, Uteshev, 2022).

These processes have a significant impact on the dynamics of the country's overall economic development, the structure of the labor market, the level of employment, and the qualitative composition of human capital. Therefore, the study of internal migration is relevant in terms of forming a balanced model of regional development, increasing the effectiveness of socio-economic policy, and ensuring long-term economic growth.

The main goal of this article is to identify the main trends in internal migration in Kazakhstan, comprehensively analyze the impact of urbanization and regional inequality on economic development, and, based on the results obtained, develop policy recommendations aimed at improving regional policy, developing urban and rural infrastructure, and effectively managing migration processes.

Internal migration in the Republic of Kazakhstan has become one of the most important factors determining the trajectory of the country's socio-economic development at the present stage. The territorial

movement of the population is closely related to the acceleration of the urbanization process, the uneven level of economic development between regions, and structural changes in the labor market. Internal migration, on the one hand, enhances the development of economically active regions, but on the other hand, leads to a deepening of socio-economic problems in rural and peripheral regions. This process directly affects the demographic structure, the quality of life of the population, and the balance of regional labor resources (Shohan, 2024).

Migration and the labor market have been widely studied in international and domestic scientific literature. The majority of studies have focused on analyzing the impact of migration on economic growth, labor productivity, and the quality of human capital.

Human capital theory (Becker, 2020) views migration as an investment decision aimed at increasing an individual's income. The emigration of highly skilled personnel represents a loss of human capital for the national economy and may reduce long-term labor productivity. In foreign studies, migration processes are considered from the perspective of neoclassical theory, human capital theory, and new institutional economics. Borjas G.J. explains the impact of migration on the labor market through wage differentiation, emphasizing that migration changes labor supply and influences the wage structure (Borjas, 2024). OECD reports show that migration increases economic concentration in urbanized areas and increases labor productivity (OECD, 2025). World Bank studies highlight the relationship between migration and economic transformation and emphasize the crucial role of human capital quality (World Bank, 2025). Dustmann C., Görlach J. -S. study aimed to analyze the economic aspects of temporary population movements. The authors set out to study how temporary migration affects the economic behavior of migrants and may affect the indigenous population in the countries of origin and host countries (Dustmann, Görlach, 2021). Scientists Kishibayeva S.B., Mengjie S. studied and revealed how internal population migration has a significant impact on the socio-economic impact of regions, especially in countries with large territories and diverse conditions, such as Kazakhstan (Kishibayeva, Mengjie, 2025). Russian researchers Ryazancev S.V. and Ioncev V.A. consider the impact of migration processes on interregional imbalances in the post-Soviet space and show that the concentration of labor resources in the central regions leads to the demographic weakening of peripheral regions (Ryazancev, 2019; Ioncev, 2016). Among Kazakhstani scientists, there are works that study the issue of migration and the labor market. Sejtkaiev M., Uteshev B. analyze the impact of internal migration on the urbanization process (Sarsembaev, 2019), Sultanova G. connects the sectoral transformation in the labor market structure with the migration factor (Sultanova, 2022). Kasymov T. studies the impact of the emigration of highly qualified personnel on the innovative sector and shows the long-term risks of the outflow of human capital (Kasymov, 2022). However, the majority of existing studies consider migration from individual aspects. A comprehensive integrated analysis of the interrelationships between migration and urbanization, labor productivity and industry transformation over the period 2010–2024 is insufficient. This study aims to fill this scientific gap.

Materials and Methods

Elements of trend and content analysis were introduced to assess migration dynamics. Through trend analysis, long-term trends, annual changes, and forecast scenarios of internal and external migration flows were identified. The content analysis method allowed for the systematization of qualitative information on migration policy from regulatory documents, government programs, social research, and media materials (Natsionalnoe biuro statistiki, 2025).

The study covered the period 2010–2024, covering all regions of Kazakhstan and the main external migration routes. This period allowed for a comprehensive assessment of changes in the socio-economic situation in the country, structural transformation of the labor market, and the impact of international migration trends.

Internal migration in Kazakhstan is mainly directed from rural areas to cities. This trend is explained by the small number of industrial enterprises in rural areas, the narrow labor market, the underdevelopment of social infrastructure and low income levels. In addition, in recent years, migration to suburban areas, as well as migration between cities, has become widespread. Economic opportunities, high wages, access to education and medical services have increased the concentration of the population in large cities such as Astana, Almaty, Shymkent, Karaganda. These cities have become centers of agglomeration development and are emerging as the main engines of regional economic growth.

According to official data for 2024, the level of urbanization in Kazakhstan has reached about 60 %. This indicator contributes to the accumulation of labor resources, educated youth and innovative potential in cities, accelerating economic growth. The development of the service sector, small and medium-sized businesses, and high-tech industries in cities is accelerating, and labor productivity is increasing. However, the high pace of urbanization also creates problems such as housing shortages, increased pressure on transport infrastructure, environmental problems and a sharp increase in demand for social services. In

addition, mass migration of the population leads to demographic decline and weakening of human capital in rural areas, which in turn limits the long-term development prospects of the rural economy.

One of the main reasons for the increase in internal migration is regional economic inequality. The level of socio-economic development of the regions of Kazakhstan differs significantly. While economic stability is maintained in regions with high industrial potential and investment attractiveness, unemployment is high in regions dependent on agriculture. The conducted analyses show that the difference in gross regional product per capita between regions is 1.5–2 times. This difference stimulates the migration of the population to economically developed regions, strengthens migration flows, and also deepens the social imbalance between regions. When considering the socio-economic consequences of internal migration, the main directions and their impact can be shown in the following Table 1.

Table 1. Main directions and consequences of internal migration in Kazakhstan

Migration direction	Main reasons	Economic consequences
From village to city	Unemployment, low income, weak infrastructure	Growing urbanization, declining rural population
Between regions	Concentration of investment and production	Redistribution of labor resources
To the suburbs	Housing price difference	Formation of agglomerations
Between cities	Career growth, salary difference	Concentration of specialists
To economic centers	Education and career opportunities	Increased innovative potential

Note: compiled by the authors

As can be seen from this table, internal migration occurs in different directions, and each direction has its own economic and social consequences. Migration from rural to urban areas leads to increased urbanization, concentrating the labor force and educated personnel in cities, but causes demographic decline in rural areas. Migration between regions ensures the redistribution of labor resources and accelerates the development of economic centers. Migration between suburban and urban areas affects the formation of urban agglomerations and the accumulation of specialists and qualified personnel. Migration directed to economic centers contributes to an increase in innovative potential and the active development of entrepreneurship.

Internal migration has a direct and indirect impact on economic development. The concentration of skilled labor in large cities increases production efficiency and creates favorable conditions for the development of innovative activities. The migration of young people to cities for the purpose of education and professional experience improves the qualitative composition of human capital. In addition, migration stimulates the development of infrastructure and service sectors, increases economic activity in the housing construction, transport, and social services sectors (Human Development Report, 2025). However, this process also has negative consequences. The reduction of labor resources in rural and peripheral regions leads to a weakening of the local economy, deterioration of social infrastructure and demographic aging. The widening gap between economically developed and lagging regions can exacerbate social inequality and threaten long-term sustainable development goals. The impact of internal migration on regional economic development and social structure is presented in Table 2 below.

Table 2. The relationship between regional economic development and migration

Regions	Main industry	Migration process
Almaty, Astana	Service, finance, innovation	Positive migration balance
Karaganda region	Industry	Neutral
Northern regions	Agriculture, processing	Negative
Southern regions	Agriculture	Negative
Western regions	Oil and gas sector	Deviating

Note: compiled by the authors

As can be seen from this table, the impact of internal migration varies by region. Economic centers such as Almaty and Astana experience a positive migration balance: migration directed to cities increases economic activity and concentrates innovative and professional potential. Industrial regions such as Karaganda also experience a positive migration balance, but a negative migration balance is observed in the Northern, Southern and some Western regions. These regions are experiencing a labor shortage, demographic decline and deterioration of social infrastructure. In the Western regions, the migration process is volatile, as the arrival and departure of the population is dynamic due to investments and projects in the oil and gas sector.

Thus, to effectively manage the internal migration process, a comprehensive policy is needed that takes into account the specifics of each region: it is important to balance economic development, attract investment to rural and peripheral regions, and reduce regional inequality by strengthening social infrastructure.

Internal migration reshapes the spatial structure of economic development. On the one hand, in economically active regions, labor productivity and investment attractiveness increase, creating a favorable environment for innovative development. On the other hand, the reduction of labor resources in rural and peripheral regions leads to a weakening of the local economy, a decrease in entrepreneurial activity, and the deterioration of social infrastructure (Shakeev, 2024). This situation leads to increased regional inequality and deepening social imbalances. The socio-economic impact of this process is presented in Table 3 below.

Table 3. Socio-economic impacts of internal migration

Sphere of influence	Positive results	Negative consequences
Labor market	Concentration of qualified personnel	Labor shortage in rural areas
Economic growth	Growth in GDP in cities	Regional development inequality
Human capital	Growth of knowledge and skills	Demographic aging
Infrastructure	Development of urban services	Infrastructure overload
Social stability	Employment growth	Risk of social tension

Note: compiled by the authors

As can be seen from the table, the positive impact of internal migration is the concentration of skilled personnel in cities and economically active regions, which allows for the growth of GDP and innovative potential. However, in rural and remote regions, there are negative consequences, such as labor shortages, demographic decline, deterioration of social services and excessive burden on infrastructure. These factors require a review of regional policy and the adoption of comprehensive measures to balance the socio-economic consequences of migration.

In terms of human capital, internal migration expands the opportunities for young people to receive education, gain professional experience, and engage in innovative activities. These factors have a positive impact on increasing the competitiveness of the national economy. However, the mass exodus of young people in rural areas leads to a demographic imbalance, a decline in the quality of social services, and a weakening of long-term development potential.

Thus, internal migration in Kazakhstan requires a review of regional policy, highlighting the interrelationship between urbanization and economic development. To effectively manage migration processes, it is necessary to strengthen investment policies aimed at equalizing the economic potential of regions, create jobs in rural areas, and develop social and engineering infrastructure. In addition, it is important to comprehensively improve housing construction, the transport system, and environmental policy in order to reduce the consequences of urbanization in large cities. A balanced regional development policy that takes into account internal migration is one of the main mechanisms for ensuring long-term socio-economic stability of Kazakhstan.

Assessment of the long-term effects of internal migration processes is of particular importance from the point of view of regional development planning. Currently, migration in Kazakhstan is manifested as a largely *self-regulating* process, dependent on market factors. While this situation accelerates the further development of economically attractive regions, it increases the risk of reducing the potential of weak regions. Therefore, internal migration should be considered not only as a demographic phenomenon, but also as *a factor restructuring the economic space*.

Analysis of the impact of internal migration on regional labor markets shows that, although the unemployment rate in the regions receiving migration has decreased relatively, the problem of skill mismatch in the labor market arises. The education and skills of migrants do not always correspond to the specific requirements of the urban labor market. This is especially noticeable among young people and indicates the need to improve the system of additional professional training. Vocational retraining programs, flexible educational courses, and vocational adaptation measures are important for the effective use of labor in cities (Sarisova, 2025).

Although there has been a formal decrease in unemployment in the regions of migration, this is due to a decrease in the population. That is, the effect is not an increase in economic activity, but a decrease in the population. Such a situation can lead to a decline in the regional economy, a reduction in the tax base, and an increase in the dependence of local budgets in the long term.

Below is an infographic (Fig. 1) to illustrate this effect.

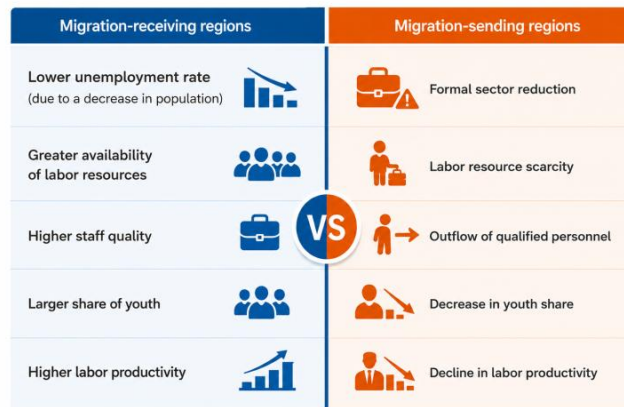


Figure 1. The impact of internal migration on the labor market

Note: compiled by the authors

On the left there are the regions receiving migration (for example, Astana, Almaty, Shymkent), where there is a concentration of personnel, a high proportion of youth, and increased labor productivity.

On the right there are depicted regions of migration (rural areas, remote areas), where there is an outflow of skilled personnel, a decrease in formal unemployment, and a labor shortage.

The social consequences of internal migration are also significant. Rapid population growth in cities increases social stratification and deepens income inequality. In peri-urban areas, the lack of infrastructure leads to the formation of socially vulnerable groups. In rural areas, the aging of the population reduces the effectiveness of social services and places additional burdens on the health and education systems (Godovoi otchet o rynke truda, 2025). The social impact of this process is shown in Table 4 below.

Table 4. Social consequences of internal migration

Social indicator	Urban areas	Rural areas
Population density	In progress	On the decline
Demand for social services	Very high	Low, but limited availability
Housing problem	Sharp	Relatively stable
Demographic structure	Young people dominate	High proportion of elderly people
Social inequality	In progress	Steady but deep

Note: compiled by the authors

From an economic point of view, internal migration may lead not to economic convergence between regions, but rather to divergence. This is because the concentration of capital, labor, and innovative resources in large economic centers limits the development opportunities of peripheral regions. This situation requires the state to conduct an active regional policy. The following 5 tables show the main areas of regulation of internal migration.

Table 5. Main directions of regulation of internal migration

Policy direction	Contents	Expected result
Regional investment policy	Attracting investment to vulnerable regions	Economic balance
Rural development	Job creation, infrastructure	Reducing migration pressure
Urban planning	Housing, transport, ecology	Mitigating the effects of urbanization
Labor market regulation	Retraining programs	Personnel compliance
Social policy	Adaptation of settlers	Social stability

Note: compiled by the authors

Internal migration in Kazakhstan is a strategically important process that reflects the complex and multifaceted interrelationship between economic development, urbanization, and regional inequality. Effective management of this phenomenon requires a comprehensive approach that is not limited to improving migration policy alone, but is closely integrated with regional development, labor market, social infrastructure, and human capital development policies. Only such a systematic policy can ensure territorially balanced and sustainable socio-economic development of Kazakhstan (Nurgalieva, 2021).

The article used the following research methods to comprehensively analyze internal migration processes in the Republic of Kazakhstan:

- **Statistical analysis**—based on official data from the National Bureau of Statistics of the Republic of Kazakhstan for 2010–2024, the dynamics of internal migration flows, the level of urbanization, and regional socio-economic indicators were studied.

- **Documentary analysis**—state strategic and program documents, including regional development programs, territorial development concepts, and regulatory legal acts related to migration policy, were analyzed.

- **Comparative analysis**—the relationships between the level of urbanization, regional gross domestic product (GDP), employment, and unemployment indicators were examined comparatively across regions.

- **Economic-analytical method**—the impact of migration on the labor market, the structure of human capital, and the pace of regional economic development was assessed.

- **Graphic visualization**—tables and flowcharts were used to visually illustrate regional migration dynamics, urbanization trends, and differences between regions.

Results

The results of the study showed that internal migration in Kazakhstan has a significant impact on socio-economic development. Between 2010 and 2024, the volume of internal migration directed to large cities (Astana, Almaty, Shymkent) increased by about 20 %, which clearly indicates the acceleration of the urbanization process. The increase in the share of the urban population has led to the concentration of labor resources, young people and skilled personnel in economic centers.

The main factors of internal migration are closely related to regional economic inequality. The difference in GDP per capita between the western regions and the cities of Almaty and Astana reaches 2 times, and the unemployment rate in rural areas remains at 12–15 %. These indicators strengthen the migration of the population towards economically developed regions.

Internal migration processes also have a significant impact on the labor market. In Kazakhstan, the rate of internal migration from 2010 to 2024 showed a steady increase, clearly demonstrating the trend of urbanization of the population. If in 2010 the volume of internal migration was 702 thousand people, in 2024 this figure reached 1,120 thousand people. During this period, the share of the urban population increased from 57.4 % to 61.5 %, which characterizes the slow but steady growth of urbanization.

The urbanization impact of internal migration was characterized by its focus on large cities. In 2010, 42 % of internal migration occurred in large cities, while in 2024 this figure reached 55 %. This trend is associated with the increasing attractiveness of the labor market, infrastructure, and economic opportunities in large cities. The annual urbanization growth rate, although in some years it is observed to be decreasing or stable, fluctuates on average between 0.2–1.0 %. For example, in 2021, the annual urbanization growth rate was 1.0 %, which was observed as the most intensive period of internal migration, while in 2020 it showed — 0.3 %, reflecting the impact of pandemic and economic factors (Tab. 6).

Table 6. Internal migration, urban population, and urbanization, 2010–2024

Year	Internal migration, thousand people	Share of urban population, %	Annual growth of urbanization, %	Share of migration to large cities, %
1	2	3	4	5
2010	702	57.4	-	42
2011	730	57.8	0.7	43
2012	755	58.2	0.7	44
2013	780	58.5	0.5	45
2014	820	58.8	0.5	46
2015	865	58.9	0.2	47
2016	890	59.3	0.7	48
2017	920	59.7	0.7	49
2018	950	60.0	0.5	50
2019	975	60.3	0.5	51
2020	980	60.1	-0.3	51
2021	1010	60.7	1.0	52
2022	1050	61.0	0.5	53
2023	1105	61.2	0.3	54
2024	1120	61.5	0.5	55

Note: Kazakhstan Republic National statistics Bureau of the Republic of Kazakhstan demographic and migration data, Almaty: National statistics bureau, 2025

This trend reflects the acceleration of urbanization and the concentration of economic activity in large cities and agglomerations.

Internal migration has a direct impact on the labor market. While the skilled labor force increases and labor productivity increases in receiving cities, the labor shortage in sending regions increases, hindering the development of local entrepreneurship. In addition, the concentration of innovative potential and entrepreneurial activity in cities accelerates economic growth, while rural areas experience demographic decline and a decrease in economic activity (Pravitelstvo Respubliki Kazakhstan, 2025). To clearly illustrate this process, Figure 2 shows the main indicators of internal migration (2010–2024).

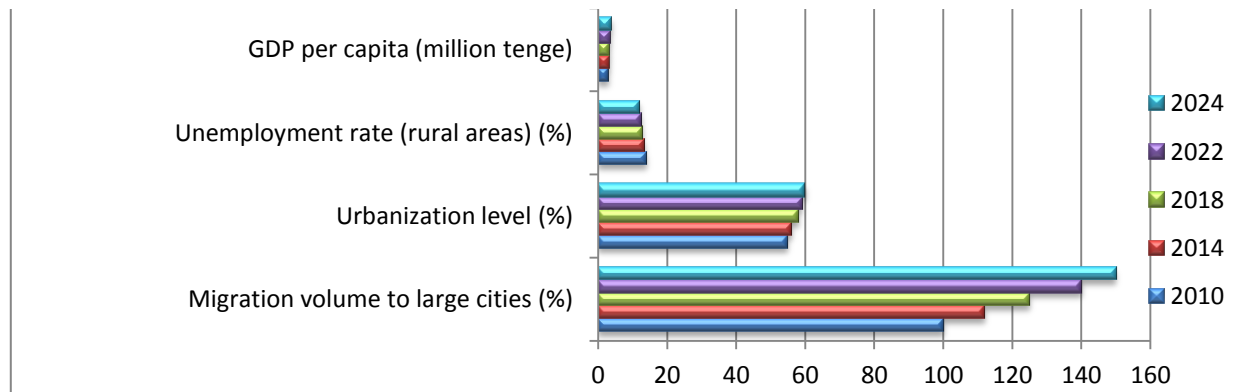


Figure 2. Key indicators of internal migration (2010–2024)

Note: compiled by the authors

The economic consequences of internal migration are wide-ranging. The concentration of skilled personnel in the receiving regions increases efficiency in production and services, creates conditions for the launch of new business projects, and promotes the development of innovative activities. In terms of human capital, the migration of young people to cities for the purpose of education and professional experience contributes to the growth of innovative potential. Table 7 is presented to illustrate the positive and negative consequences of this process.

Table 7. Economic and social impacts of internal migration

Industry	Positive results	Negative consequences
Labor market	Concentration of qualified personnel	Labor shortage in rural areas
Infrastructure	Development of urban services	Housing shortage, burden on transport infrastructure
Human capital	Youth education and experience	Demographic decline in rural areas
Economic growth	GDP growth and investment attraction in cities	Regional development inequality
Social services	Increased availability of services	Decline in social services in rural areas

Note: compiled by the authors

Research has shown that while migration leads to demographic decline and a decline in human capital in rural and remote areas, it also contributes to increased economic activity, entrepreneurship, and innovation in host cities. In this regard, the following policy recommendations have been made to manage internal migration and reduce regional inequality: attracting investment projects to rural and remote areas, supporting local entrepreneurship, developing social infrastructure, and improving housing and transport infrastructure to mitigate the negative effects of urbanization in cities (Michaillat, 2023). The proposed measures related to internal migration can be seen in Table 8.

Table 8. Recommended measures related to internal migration

Purpose	Recommended activities
Reducing regional inequality	Attracting investment to rural regions and supporting entrepreneurship
Urbanization management	Development of urban infrastructure, improvement of housing programs
Equalizing the labor market	Training local staff, reducing unemployment
Infrastructure development	Improving housing, transportation, and social services
Long-term development	Developing regional development strategies that take migration into account

Note: compiled by the authors

Thus, internal migration in Kazakhstan demonstrates the interrelationship between urbanization and economic development and requires a review of regional policy. Effective management of internal migration processes can ensure the socio-economic stability of the country.

Discussion

Internal migration in Kazakhstan clearly demonstrates the complex and interdependent relationships between urbanization and economic development. The results of the study show that internal migration is not only a territorial movement of the population, but also has become a strategic factor shaping the socio-economic development of the country. Migration directed to large cities concentrates production and innovation activity, ensuring the concentration of personnel, human and investment resources in economic centers. However, this process leads to demographic decline, labor shortages, degradation of social infrastructure and increased regional inequality in rural and remote areas.

The main driving force of internal migration is regional economic inequality. Economically developed cities and industrial centers provide jobs and high wages, quality education and medical services, which are the basis for attracting the population to these regions. In addition, low economic activity in rural areas, low production volumes and insufficient social services are factors that strengthen migration flows. This situation significantly affects the long-term socio-economic development of the country, as labor resources and human capital are unevenly distributed, and regional economic development imbalances increase.

Internal migration is a multifaceted factor that must be taken into account when planning economic strategies. The high rate of urbanization puts pressure on urban infrastructure and housing, creating additional burdens on transport, energy, water and sanitation services. In addition, while the concentration of personnel allows for the development of innovative projects, the shortage of professional and skilled labor resources in rural areas hinders the development of local entrepreneurship and production (Zhumabekov, Tleuberdi, 2024).

From an economic perspective, the positive effects of internal migration are observed in cities: increased labor productivity, the emergence of new businesses and startup projects, the development of innovative activities, the concentration of knowledge and professional skills. At the same time, the negative consequences are characteristic of rural and remote areas: demographic decline, labor shortages, deterioration of social infrastructure, and a slowdown in local economic activity.

Recommendations:

1. Attracting investment and developing industrial infrastructure in rural and remote regions: These measures will help stabilize the local economy, create new jobs, and reduce the pressure on the population to migrate to cities. It is recommended that investment projects be directed to the agriculture, manufacturing, and logistics sectors.

2. Balancing the regional labor market by creating permanent jobs: supporting entrepreneurship in rural and remote areas, providing loans and subsidies to small and medium-sized businesses, reducing unemployment and ensuring local formation of labor resources through the development of production cooperatives and agro-industrial complexes.

3. Developing urban infrastructure and mitigating the effects of urbanization: reducing the negative impacts of urbanization by improving housing, transportation, public services, environmental management, and urban engineering infrastructure. These measures will improve the quality of life in cities and reduce social tensions.

4. Implementation of vocational retraining and adaptation programs: development of vocational training, retraining, and motivational programs to ensure the adaptation of newly arrived residents to the labor market in the regions receiving migration. These measures will increase employability and strengthen economic activity.

5. Supporting the local economy and implementing a comprehensive regional policy: Balancing internal migration pressure by developing local entrepreneurship in rural areas, improving social services and infrastructure, and attracting investments to the local budget. In addition, long-term socio-economic stability can be ensured by taking into account migration trends in regional development strategies.

Internal migration processes in Kazakhstan directly affect the formation of a balance between urbanization and economic development. The growth of the population in cities puts pressure on infrastructure; therefore, measures are needed to develop urban infrastructure, improve housing construction and the transport system. In rural areas, the socio-economic potential is decreasing, regional inequality is observed, to reduce this situation, it is important to attract investment to rural regions and support entrepreneurship. Since per-

sonnel are concentrated in cities, and there is a shortage in rural areas, professional retraining programs and measures to support the local labor market are used. In addition, economic activity is increasing in cities, and infrastructure in rural areas is subject to degradation; therefore, it is necessary to develop engineering and social infrastructure. The education and accumulation of experience of young people strengthens human capital and contributes to the growth of innovative potential, for which it is important to implement educational and professional orientation programs. Investment and innovation are concentrated in cities, and economic development is growing, therefore, when developing a regional development strategy, the migration factor should be taken into account. Thus, managing internal migration processes in Kazakhstan is an important tool for ensuring a balance between urbanization and economic development, and comprehensive policies and recommendations will strengthen the country's socio-economic stability, reduce inequality between regions, and achieve long-term development goals.

Conclusion

In conclusion, internal migration processes in Kazakhstan have a significant impact on the socio-economic development of the country and its management requires a comprehensive, systematic policy. The concentration of qualified personnel in host cities, the growth of investments and innovative activities increase economic activity, create conditions for the implementation of new business projects, the development of industrial and service sectors. In addition, the migration of young people to cities for the purpose of education and professional experience strengthens human capital and contributes to the growth of regional innovation potential. This, in turn, increases the overall competitiveness of the country and accelerates economic dynamics in urban centers.

However, in rural and remote regions, demographic decline, staff shortages, infrastructure degradation, and reduced access to social services exacerbate regional inequalities. This leads to reduced economic activity in rural areas, limited entrepreneurial activity, and weakened social stability. At the same time, rapid urbanization in cities puts additional pressure on infrastructure, housing, and transportation systems, which exacerbates the negative effects of urbanization.

Given these circumstances, a comprehensive policy is needed to effectively manage internal migration. First, it is important to increase regional potential by attracting investment projects to rural and remote regions, supporting local entrepreneurship, and developing social infrastructure. Second, in order to reduce the negative consequences of urbanization in cities, it is necessary to build housing, improve transport infrastructure, and expand social services. Third, it is important to reduce the shortage of personnel in rural areas by providing retraining programs and professional education opportunities to balance the labor market.

In the long term, integrating the impact of internal migration into regional development strategies will help maintain the country's socio-economic stability, achieve balanced development between regions, and increase innovation potential. This process requires a comprehensive approach, combining not only economic or demographic factors, but also social, infrastructure, and human capital aspects. Through an active and coordinated policy, it is possible to enhance the positive impact of internal migration and reduce its negative consequences, reduce economic inequality between regions, and achieve Kazakhstan's long-term strategic goals.

Also, the management of internal migration requires coordination of state planning, regional investment policy, urbanization regulation and social programs. This approach is not only a demographic or economic issue for Kazakhstan, but also becomes a strategic tool for ensuring the socio-economic stability of the country. Therefore, through effective management of internal migration, it is possible to ensure balanced development, growth of innovative potential and social stability in all regions of the country.

References

- Borjas G.J. *Labor Economics* (9th ed.). New York: McGraw-Hill Education, 2024. — 600 p.
- Dustmann C. The economics of temporary migrations / C. Dustmann, J. -S. Görlach // *Journal of Economic Literature*. — 2021. — Vol. 59. — No.4. — P. 1085–1148. DOI: 10.1257/jel.20191412.
- Kishibayeva S.B. Migration and regional economic development: Evidence from Kazakhstan / S.B. Kishibayeva, S. Mengjie // *Central Asian Economic Review*. — 2025. — Vol. 12. — No. 1. — P. 59–85.

Michaillat P. Migration-Induced Unemployment: A Model and Empirical Evidence / P. Michaillat // *Review of Economic Dynamics*. — 2023. — No. 47. — P. 385–406. <https://doi.org/10.1016/j.red.2023.07.005>.

OECD. *International Migration Outlook 2025*. — Paris: OECD Publishing.

World Bank (2025). *Kazakhstan Economic Update: Labor Market and Migration*. — Washington, DC: World Bank.

Беккер Г.С. Человеческий капитал: экономический подход к человеческому поведению / Г. С. Беккер. — М.: Экономика. — 2020. — 320 с.

Жумабеков Б. Внутренняя миграция и региональный рынок труда: состояние Казахстана / Б. Жумабеков, Е. Тлеуберди // *Казахстанский журнал трудовых исследований*. — 2024. — № 2(11). — С. 45–67.

Ионцев В.А. Новые тенденции и формы миграции в России / В.А. Ионцев, С.В. Рязанцев, С. В. Ионцева // *Экономика региона*. — 2016. — 12(2). — С. 499–509.

Касымов Т. Эмиграция высококвалифицированных кадров и влияние на инновационный сектор / Т. Касымов // *Вестник экономики и управления*. — 2022. — № 31(2). — С. 34–51.

Министерство труда и социальной защиты населения. Годовой отчет о рынке труда. Нур-Султан: Министерство труда. — 2025.

Национальное бюро статистики Республики Казахстан. Демографические и миграционные данные в Казахстане, Алматы: Национальное бюро статистики. — 2025.

Нурғалиева Б. Трансформация структуры рынка труда и миграционные факторы / Б. Нурғалиева // *Аналитический вестник экономики*. — 2021. — № 15(2). — С. 112–127.

Правительство Республики Казахстан. Стратегия миграции и размещения населения 2020–2025. Нур-Султан: Изд-во Правительства РК. — 2025.

Программа развития ООН. *Human Development Report 2025: Human Mobility and Development*. — New York: UNDP.

Рязанцев С.В. Вклад миграции в демографическое и социально-экономическое развитие России / С. В. Рязанцев // *Социологические исследования*. — 2019. — № 9. — С. 116–127.

Сарисова М. Трудовая миграция молодежи в Казахстане: особенности и тренды / М. Сарисова // *Вестник университета Туран*. — 2025. — № 3(65). — С. 88–110.

Сарсембаев А. Тенденции внутренней миграции и урбанизации: пример Казахстана / А. Сарсембаев // *Журнал евразийской экономики*. — 2019. — № 6(4). — С. 78–90.

Сейткалиев М. Взаимосвязь между миграцией и рынком труда: опыт Казахстана / М. Сейткалиев, Б. Утешев // *Международный экономический журнал*. — 2022. — № 33(336). — С. 45–62

Султанова Г. Отток высококвалифицированных кадров в Казахстане и влияние на экономику / Г. Султанова // *Евразийский экономический журнал*. — 2022. — № 12(4). — С. 55–70.

Шакеев С. Современные подходы к миграционной политике: международные и национальные аспекты / С. Шакеев // *Казахстанский журнал политологии*. — 2025. — № 1(18). — С. 101–126.

Шохан Р. Влияние миграционных потоков на рынок труда Республики Казахстан / Р. Шохан // *Журнал социологии и социальной антропологии*. — 2024. — № 27 (3). — С. 45–62.

References

Becker, G. S. (2020). *Chelovecheskii kapital: ekonomicheskii podkhod k chelovecheskomu povedeniiu* [Human Capital: An Economic Approach to Human Behavior]. Moscow: Ekonomika [in Russian].

Borjas, G. J. (2024). *Labor Economics* (9th ed.). New York: McGraw-Hill Education.

Dustmann, C. & Görlach J. -S. (2021). The economics of temporary migrations. *Journal of Economic Literature*, 59(4), 1085–1148. DOI: 10.1257/jel.20191412.

Ioncev, V.A. (2016). *Novye tendentsii i formy migratsii v Rossii* [New Trends and Forms of Migration in Russia]. *Ekonomika regiona — Regional Economy*, 12(2), 499–509 [in Russian].

Kasymov, T. (2022). *Emigratsiia vysokokvalifitsirovannykh kadrov i vliianie na innovatsionnyi sektor* [The Emigration of Highly Qualified Personnel and Its Impact on the Innovation Sector]. *Vestnik ekonomiki i upravleniia — Bulletin of Economics and Management*, 31(2), 34–51 [in Russian].

Kishibayeva, S. B. & Mengjie, S. (2025). Migration and regional economic development: Evidence from Kazakhstan. *Central Asian Economic Review*, 12(1), 59–85.

Michaillat, P. (2023). *Migration-Induced Unemployment: A Model and Empirical Evidence*. *Review of Economic Dynamics*, 47, 385–406. <https://doi.org/10.1016/j.red.2023.07.005>

(2025). Ministerstvo truda i sotsialnoi zashchity naseleniia [Ministry of Labor and Social Protection of the Population]. *Godovoi otchet o rynke truda*. Nur-Sultan: Ministerstvo truda [in Russian].

(2025). *Natsionalnoe biuro statistiki Respubliki Kazakhstan. Demograficheskie i migratsionnye dannye v Kazakhstane* [National Bureau of Statistics of the Republic of Kazakhstan. Demographic and Migration Data in Kazakhstan]. Almaty: Natsionalnoe biuro statistiki [in Russian].

Nurgalieva, B. (2021). Transformatsiia struktury rynka truda i migratsionnye faktori [Transformation of the Labor Market Structure and Migration Factors]. *Analiticheskii vestnik ekonomiki — Analytical Bulletin of Economics*, 15(2), 112–127 [in Russian].

OECD (2025). *International Migration Outlook 2025*. Paris: OECD Publishing.

(2025). *Pravitelstvo Respubliki Kazakhstan. Strategii migratsii i razmeshcheniia naseleniia 2020–2025* [Government of the Republic of Kazakhstan. Strategy for Migration and Population Settlement 2020–2025]. Nur-Sultan: Izdatelstvo Pravitelstva RK [in Russian].

Programma razvitiya OON. (2025). *Human Development Report 2025: Human Mobility and Development*. New York: UNDP.

Ryazancev, S. V. (2019). Vklad migratsii v demograficheskoe i sotsialno-ekonomicheskoe razvitie Rossii [The Contribution of Migration to the Demographic and Socio-Economic Development of Russia]. *Sotsiologicheskie issledovaniia — Sociological Studies*, 9, 116–127 [in Russian].

Sarisova, M. (2025). Trudovaia migratsiia molodezhi v Kazakhstane: osobennosti i trendy [Youth Labor Migration in Kazakhstan: Characteristics and Trends]. *Vestnik universiteta Turan — Bulletin of Turan University*, 3(65), 88–110 [in Russian].

Sarsembaev, A. (2019) Tendentsii vnutrennei migratsii i urbanizatsii: primer Kazakhstana [Trends in Internal Migration and Urbanization: The Case of Kazakhstan]. *Zhurnal evraziiskoi ekonomiki — Journal of Eurasian Economics*, 6(4), 78–90 [in Russian].

Sejtkaliev, M. & Uteshev, B. (2022). Vzaimosviaz mezhdu migratsiei i rynkom truda: opyt Kazakhstana [The Relationship Between Migration and the Labor Market: The Kazakhstan Experience]. *Mezhdunarodnyi ekonomicheskii zhurnal — International Economic Journal*, 33(336), 45–62 [in Russian].

Shakeev, S. (2025). Sovremennye podkhody k migratsionnoi politike: mezhdunarodnye i natsionalnye aspekty [Contemporary Approaches to Migration Policy: International and National Perspectives]. *Kazakhstanskii zhurnal politologii — Kazakhstan Journal of Political Science*, 1(18), 101–126 [in Russian].

Shohan, R. (2024). Vliianie migratsionnykh potokov na rynek truda Respubliki Kazakhstan [The Impact of Migration Flows on the Labor Market in the Republic of Kazakhstan]. *Zhurnal sotsiologii i sotsialnoi antropologii — Journal of Sociology and Social Anthropology*, 27(3), 45–62 [in Russian].

Sultanova, G. (2022). Ottok vysokokvalifitsirovannykh kadrov v Kazakhstane i vliianie na ekonomiku [The Outflow of Highly Qualified Personnel from Kazakhstan and Its Impact on the Economy]. *Evraziiskii ekonomicheskii zhurnal — Eurasian Economic Journal*, 12(4), 55–70 [in Russian].

World Bank (2025). *Kazakhstan Economic Update: Labor Market and Migration*. Washington, DC: World Bank.

Zhumabekov, B. & Tleuberdi, E. (2024). Vnutrenniaia migratsiia i regionalnyi rynek truda: sostoianie Kazakhstana [Internal Migration and Regional Labor Market: the Situation in Kazakhstan]. *Kazakhstanskii zhurnal trudovykh issledovaniia — Kazakhstan Journal of Labor Studies*, 2(11), 45–67 [in Russian].

Қазақстандағы ішкі көші-қон: урбанизация, өңірлік теңсіздік және экономикалық даму

Салтанат Байдыбекова ¹ , Анар Толамисова ^{2*} , Степан Дырқа ³ , Райхан Турысбекова ⁴ 

^{1,2,4} I. Жансүгіров атындағы Жетісу университеті, Талдықорған, Қазақстан,

³ В. Корфантего атындағы Жогары Силезия академиясы, Катовице, Польша

^{2*} zhantokab@mail.ru (хат-хабарларға арналған автор)

Андатпа

Мақаланы мақсаты — Қазақстан Республикасындағы ішкі көші-қон процестерінің қазіргі жай-күйі мен даму динамикасын жан-жақты қарау. Урбанизацияның негізгі бағыттарын, ауылдық аудандардан ірі қалалар мен экономикалық белсенді аймақтарға халықтың шоғырлану себептерін, сондай-ақ өңірлер арасындағы әлеуметтік-экономикалық даму деңгейлеріндегі айырмашылықтарды

талдау. Зерттеу барысында көші-қон ағындарының аймақтық экономикалық өсімге, өндірістік әлеуеттің шоғырлануына және инфрақұрылымдық жүктеменің артуына әсері анықталды. Зерттеу барысында экономикалық және статистикалық талдау әдістері қолданылды. Эмпирикалық талдау нәтижелері ішкі көші-қон ағындарының ірі экономикалық орталықтарда еңбек ресурстары мен инновациялық әлеуеттің шоғырлануына, қызмет көрсету секторының кеңеюіне және еңбек өнімділігінің артуына ықпал еткенін көрсетті. Нәтижесінде ішкі көші-қонның урбанизация және өңірлік дивергенция арасындағы құрылымдық өзара байланысы анықталды. Алынған қорытындылар өңірлік саясатты теңгерімді жүргізу, ауылдық аумақтарды дамыту және урбанизация салдарын басқару қажеттігін негіздейді. Сонымен қатар алынған нәтижелер ішкі көші-қонды тиімді басқару тетіктерін жетілдірудің, өңірлік теңгерімді дамуды қамтамасыз етудің және қалалық инфрақұрылымды кешенді жаңғыртудың маңыздылығын негіздейді. Зерттеу қорытындылары мемлекеттік және өңірлік даму саясатында көші-қон факторын ескеруге, аймақтар арасындағы әлеуметтік-экономикалық алшақтықты қысқартуға және елдің ұзақ мерзімді экономикалық дамуын үйлестіруге бағытталған практикалық ұсынымдар әзірлеуге мүмкіндік береді.

Кілт сөздер: ішкі көші-қон, урбанизация, өңірлік теңсіздік, аймақтық даму, экономикалық даму, еңбек нарығы, адами капитал, әлеуметтік-экономикалық әсер, қалалық инфрақұрылым, көші-қон саясаты.

Внутренняя миграция в Казахстане: урбанизация, региональное неравенство и экономическое развитие

Салтанат Байдыбекова ¹ , Анар Толамисова ^{2*} , Степан Дырка ³ , Райхан Турысбекова ⁴ 

^{1,2,4} Жетысуский университет имени И. Жансугурова, Талдықорган, Казахстан,

³ Верхнесилезская Академия им. В. Корфантего, Катовице, Польша

^{2*} zhantokab@mail.ru, автор-корреспондент,

Аннотация

Целью данного исследования является всестороннее рассмотрение современного состояния и динамики развития процессов внутренней миграции в Республике Казахстан. Анализ основных направлений урбанизации, причин концентрации населения из сельских районов в крупные города и экономически активные регионы, а также различий в уровнях социально-экономического развития между регионами. В ходе исследования выявлено воздействие миграционных потоков на региональный экономический рост, концентрацию производственного потенциала и увеличение нагрузки на инфраструктуру. В процессе исследования использованы методы экономического и статистического анализа. Результаты эмпирического анализа показали, что внутренние миграционные потоки способствовали концентрации трудовых ресурсов и инновационного потенциала в крупных экономических центрах, расширению сектора услуг и повышению производительности труда. В результате исследования выявлена структурная взаимосвязь между внутренней миграцией, урбанизацией и региональной дивергенцией. Полученные выводы обосновывают необходимость сбалансированного проведения региональной политики, развития сельских территорий и управления последствиями урбанизации. Концепция: полученные результаты обосновывают важность совершенствования механизмов эффективного управления внутренней миграцией, обеспечения регионального сбалансированного развития и комплексной модернизации городской инфраструктуры. Итоги исследования позволят учесть миграционный фактор в государственной и региональной политике развития, выработать практические рекомендации, направленные на сокращение социально-экономического разрыва между регионами и гармонизацию долгосрочного экономического развития страны.

Ключевые слова: внутренняя миграция, урбанизация, региональное неравенство, региональное развитие, экономическое развитие, рынок труда, человеческий капитал, социально-экономическое воздействие, городская инфраструктура, миграционная политика.

Information about the authors

Saltanat Baidybekova — Candidate of Economic Sciences, Professor, Zhetysu University named after I. Zhansugurov, Taldykorgan, Kazakhstan, e-mail: b-saltanat@mail.ru, ORCID ID: 0000-0002-7974-1236.

Anar Tolamisova — Master of Economics, PhD student, Zhetysu University named after I. Zhansugurov, Taldykorgan, Kazakhstan, e-mail: zhantokab@mail.ru, ORCID ID: 0009-0003-4269-0433, corresponding author.

Stefan Dyrka — Doctor of Economic Sciences, Professor, W. Korfantego Upper Silesian Academy, Katowice, Poland, ORCID ID: 0000-0002-5677-0675.

Raikhan Turysbekova — Master of Economics, Zhetysu University named after I. Zhansugurov, Taldykorgan, Kazakhstan, e-mail: turysbekova777@mail.ru, ORCID ID: 0000-0002-1149-438X.

Авторлар туралы мәліметтер

Байдыбекова С.Қ. — экономика ғылымдарының кандидаты, профессор, І. Жансүгіров атындағы Жетісу университеті, Талдықорған, Қазақстан, e-mail: b-saltanat@mail.ru, ORCID ID: 0000-0002-7974-1236.

Толамисова А.Г. — экономика магистрі, PhD докторанты, І. Жансүгіров атындағы Жетісу университеті, Талдықорған, Қазақстан, e-mail: zhantokab@mail.ru, ORCID ID: 0009-0003-4269-0433, автор-корреспондент.

Дырка С. — экономика ғылымдарының докторы, профессор, В. Корфанты атындағы Жоғары Силезия академиясы, Катовице, Польша, ORCID ID: 0000-0002-5677-0675.

Тұрысбекова Р.Қ. — экономика магистрі, І. Жансүгіров атындағы Жетісу университеті, Талдықорған, Қазақстан, e-mail: turysbekova777@mail.ru, ORCID ID: 0000-0002-1149-438X.

Сведения об авторах

Байдыбекова С.К. — кандидат экономических наук, профессор, Жетысуский университет имени И. Жансугурова, Талдықорған, Казахстан, e-mail: b-saltanat@mail.ru, ORCID ID: 0000-0002-7974-1236.

Толамисова А.Г. — магистр экономики, PhD докторант, Жетысуский университет имени И. Жансугурова, Талдықорған, Казахстан, e-mail: zhantokab@mail.ru, ORCID ID: 0009-0003-4269-0433, автор-корреспондент.

Дырка С. — доктор экономических наук, профессор, Верхнесилезская Академия им. В. Корфантего, Катовице, Польша, ORCID ID: 0000-0002-5677-0675.

Тұрысбекова Р.К. — магистр экономики, Жетысуский университет имени И. Жансугурова, Талдықорған, Казахстан, e-mail: turysbekova777@mail.ru, ORCID ID: 0000-0002-1149-438X.

Conflict of Interest

The authors declare no conflict of interest.